

Installation Manual

1.1 Prerequisites

- MATLAB runtime 9.4 must be installed. See also readme.txt.
- Minimal screen resolution: Horizontal 1024 px, vertical 768 px.
- 64-bit operating system

1.2 Setup

Run the installer by double-clicking the SmartCalc.CTM-setup.exe and follow the instructions of the Setup Wizard.

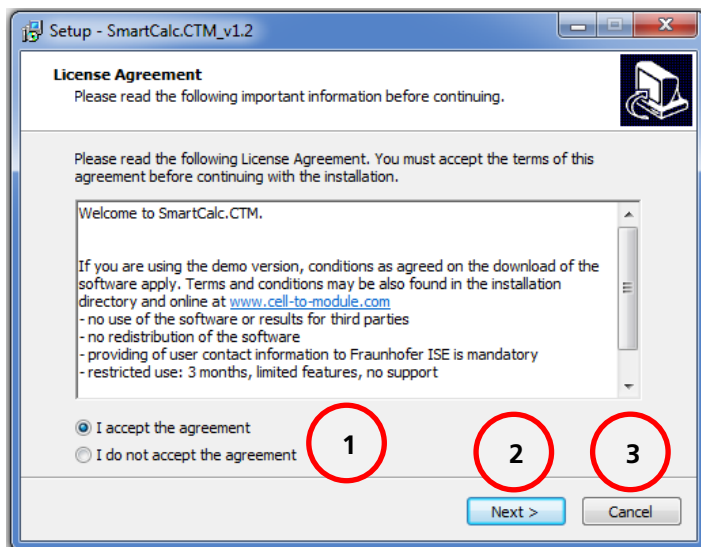
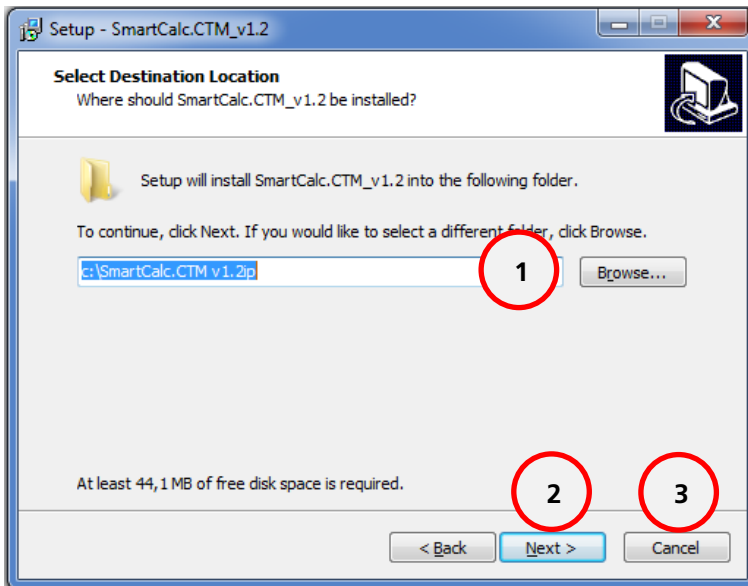


Figure 1: Setup - SmartCalc.CTM – License Agreement

- | | |
|----------|--------------------------------------|
| 1 | Choose whether to accept the license |
| 2 | Confirm to continue the installation |
| 3 | Confirm to cancel the installation |

First, you will be asked whether to accept the license. Therefore read the text and choose 1 accordingly. Proceed by *Next*.

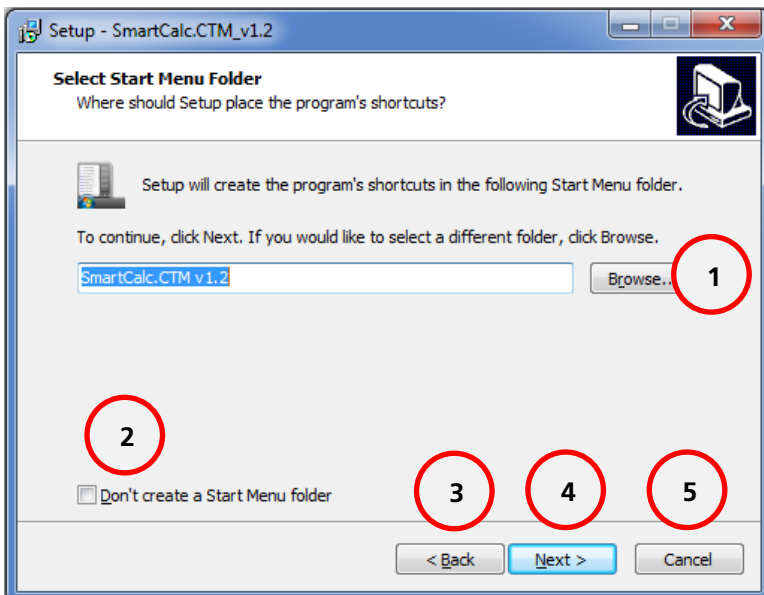


- 1 Click **Browse** to provide an individual path for the installation of SmartCalc.CTM
- 2 Click to continue the installation
- 3 Click to cancel the installation

Figure 2: Setup - SmartCalc.CTM - Select Destination Location

By clicking the *Browse* button an individual path for the install folder can be selected. Choose a destination folder in which full read/write access is given. No administration rights are required; hence the home directory is sufficient. Afterward continue the installation by confirming *Next >*.

The following window enables you to change/deactivate the entry of SmartCalc.CTM in the Start Menu folder.

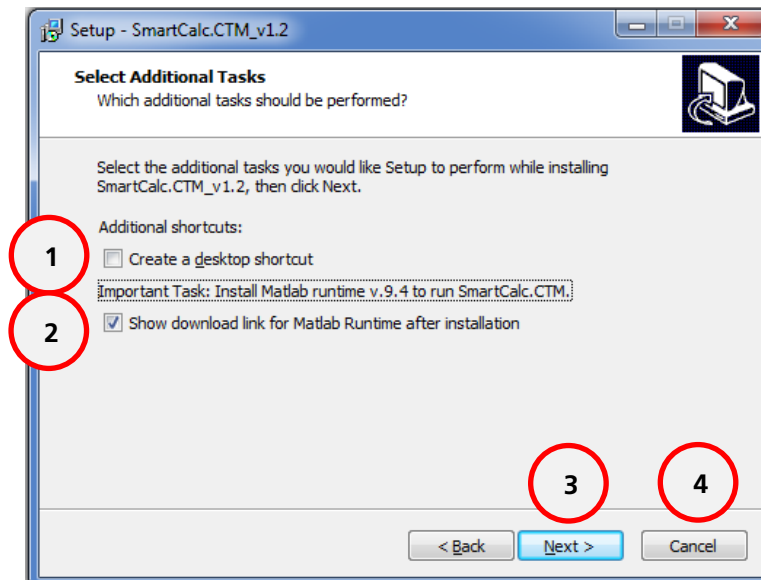


- 1 Click **Browse** to provide an individual path for the start menu folder
- 2 Mark to disable the creation of a start menu folder
- 3 Click to return to *Select Destination Location*
- 4 Click to continue the installation
- 5 Click to cancel the installation

Figure 3: Setup - SmartCalc.CTM - Select Start Menu Folder

Again by clicking the *Browse* Button an individual path for the entry can be selected. If this start menu entry is not necessary it can be deactivated by activating the checkbox otherwise continue the installation by confirming *Next* >.

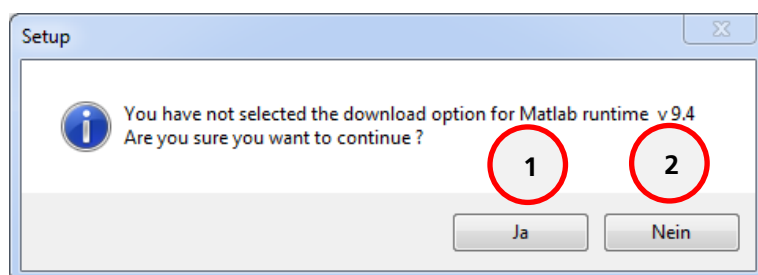
The subsequent window gives the option to select optional tasks for the installation of SmartCalc.CTM.



- 1 If marked, a shortcut on the desktop will be created
- 2 If marked, a download link for the Matlab Runtime will be shown after the installation of SmartCalc.CTM
- 3 Click to continue the installation
- 4 Click to cancel the installation

Figure 4: Setup - SmartCalc.CTM – Additional Tasks

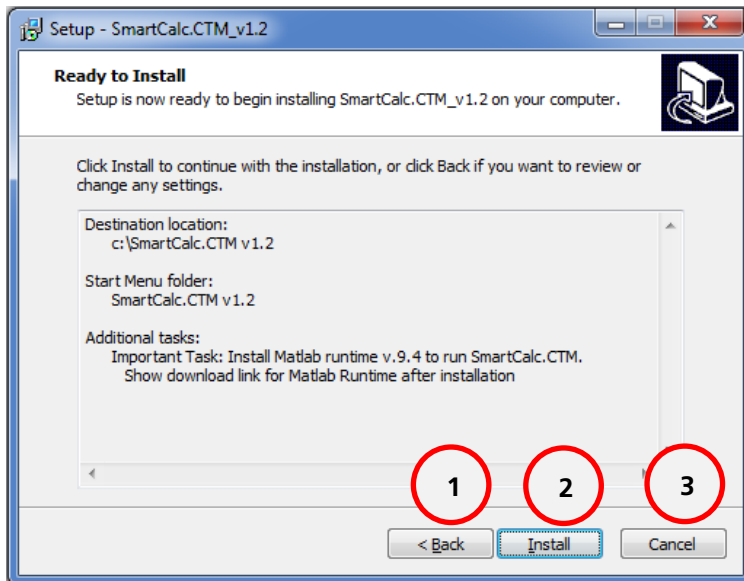
The assistant offers in addition to the SmartCalc.CTM setup two optional tasks. By activating Checkbox 1, a shortcut for SmartCalc.CTM will be created on the desktop. Checkbox 2 will show a download link for the Matlab runtime after the installation, which is necessary to run SmartCalc.CTM. By confirming *Next* >, a reminder for the Matlab download link will appear that can be skipped by confirming *Ja*



- 1 Click to continue the installation
- 2 Click to get back to *Additional Tasks*

Figure 5: Setup - Reminder for Matlab runtime

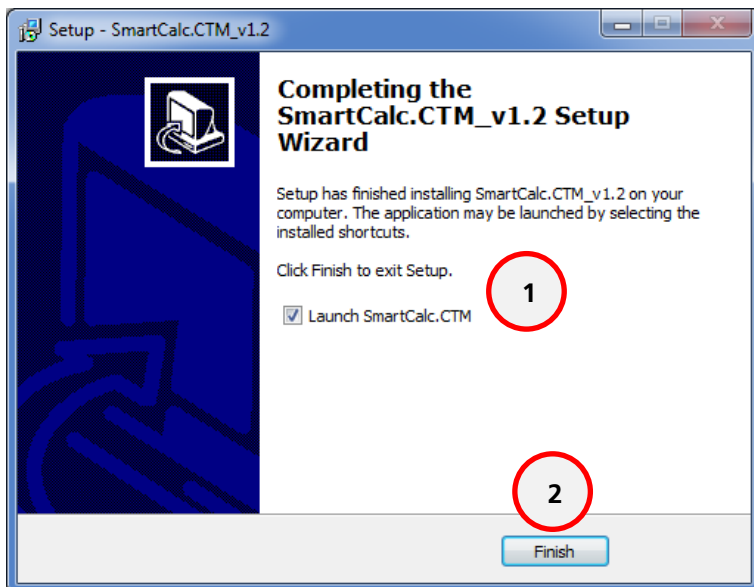
Afterward your selected additional tasks will be shown and you will be asked to continue the installation of SmartCalc.CTM by clicking the *Install* button.



- 1 Click to get back to *Additional Tasks*
- 2 Click to continue the installation
- 3 Click to cancel the installation

Figure 6: Setup - SmartCalc.CTM - Ready to Install

By clicking the *Install* button, SmartCalc.CTM will be installed in the selected folder.



- 1 Mark to launch SmartCalc.CTM after finishing the installation
- 2 Click to finish the installation
- 3 Confirm to finish the installation

Figure 7: Setup - SmartCalc.CTM – Finish

By marking Checkbox 1, SmartCalc.CTM will launch after finishing the Setup.

SmartCalc.CTM needs to write some log files. Please check your write/read rights of the installation folder. If an error message ("GUI_maincode.log: Cannot open file: permission denied. Error in => GUI_maincode.m at line 57") appears after the first start of the software please check the rights of your installation folder or contact your administrator.